

Morning Starters: Summer1 - Grasslands

Word Challenge

With the word 'bee' at one end and the word 'elephant' at the other, compile a list of animals that increase in size.

bee → ? → ? → ? → ? → elephant

Grammar Challenge

Click text to edit ✎

Create a sentence by rearranging the words below.

through grass the as the elephants
waded swooped down the bee-
eaters

Help: Start with the word 'As' and end with the word 'down'.

Did You Know?

In Botswana's grasslands, bull elephants stride majestically through the tall savannah grass, disturbing insects as they move. This creates an excellent opportunity for bee-eaters – brightly coloured, agile birds that swoop and jostle to catch the startled insects in mid-air.

Where in the world is Botswana? Click the 



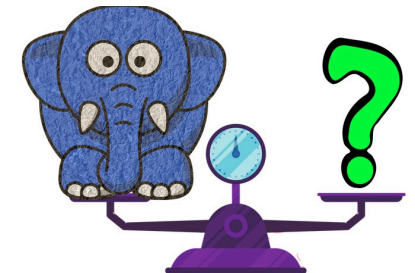
Credit: BBC One - Planet Earth II

Number Challenge

Fact: African bull elephants weigh around 6,000 kg.

Fact: Bee-eater birds weigh around 50 g.

How many bee-eaters equal the weight of an African bull elephant?



Critical Thinking

Can you think of other examples in nature where animals help each other? How do they help?