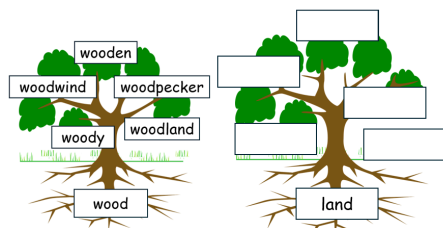


Morning Starters: Spring 1 - Woodland Wonders

Word Challenge

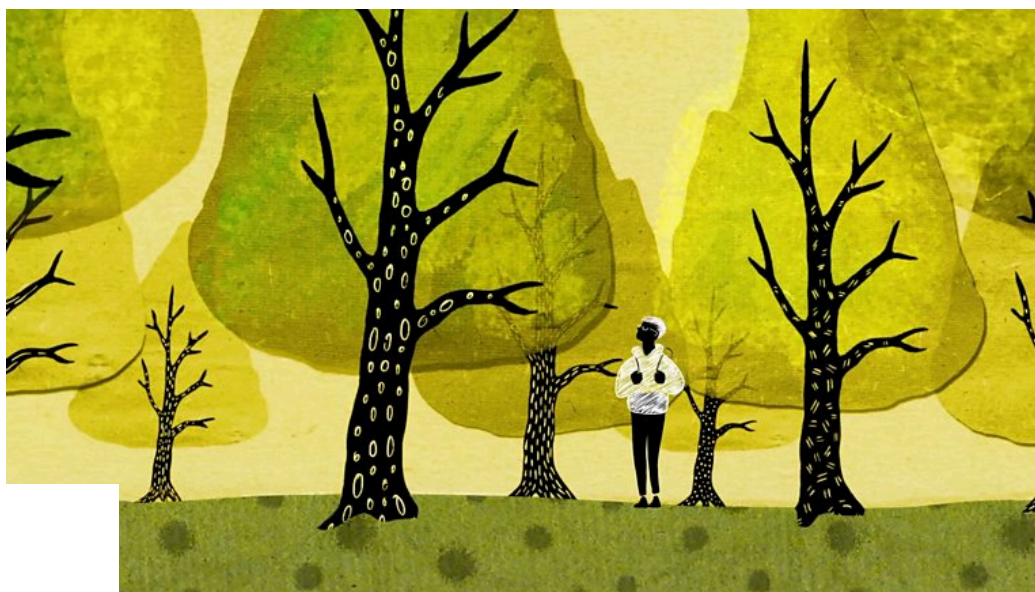
List words that contain the word root 'land'.

Help: Use the 'wood' word tree below as a guide.



Did You Know?

Beneath every forest and woodland lies an amazing hidden network of roots and fungi that connect trees and plants to one another. Nicknamed the 'Wood Wide Web', this complex network enables trees and plants to communicate with each other and share nutrients and resources. However, not everyone plays fair – some clever plants can hijack the system to sabotage their rivals and steal resources from them.



Grammar Challenge

Click text to edit

What was the question if this was the mycologist's reply?

Life on Earth as we know it would not exist without the help of fungi.

Fact: A mycologist is someone who studies fungi.

Number Challenge

Roots exist in mathematics too!

The square root of 16 is 4 because $4 \times 4 = 16$

The square root of 25 is 5 because $5 \times 5 = 25$

What are the square roots of the following numbers?

36	64	144	10,000
----	----	-----	--------

Critical Thinking

A new species of fungi has just been discovered!

Create a quick sketch, showing what it looks like above and below the ground.

Help: Fungi include edible mushrooms and poisonous toadstools.